



Groudon

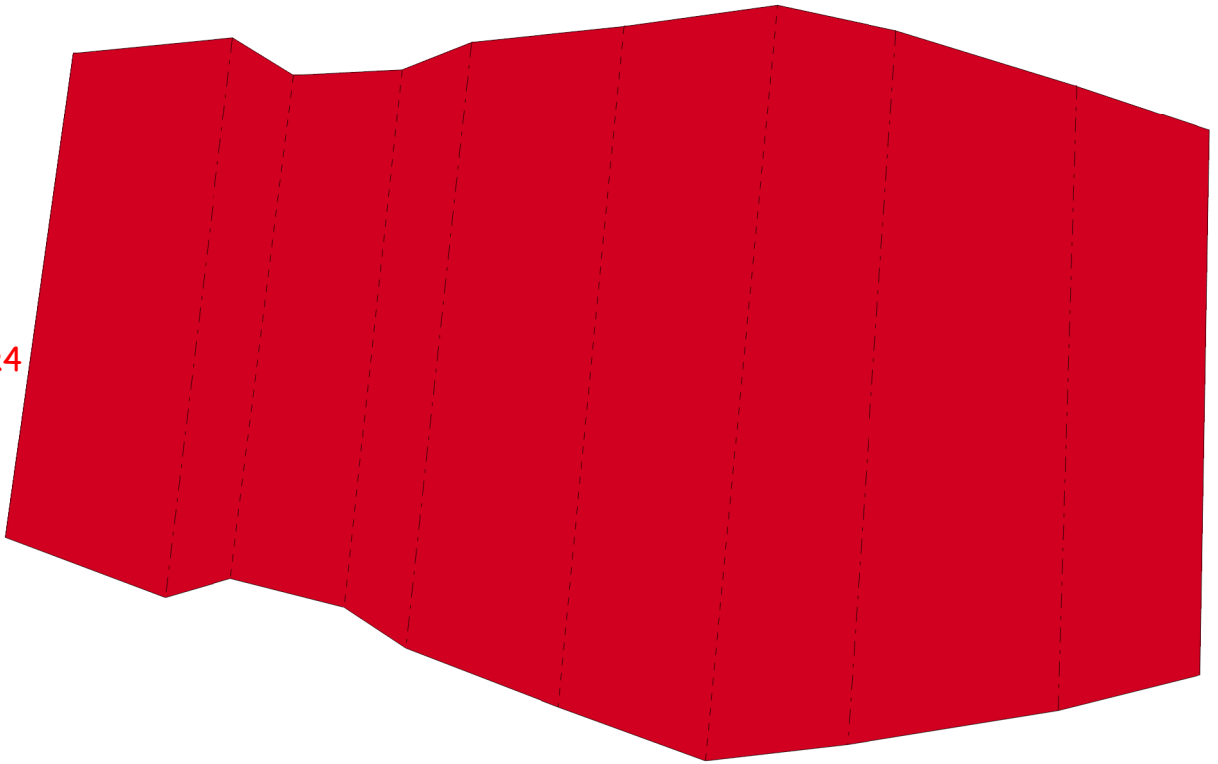
by Brandon

PaperPokés

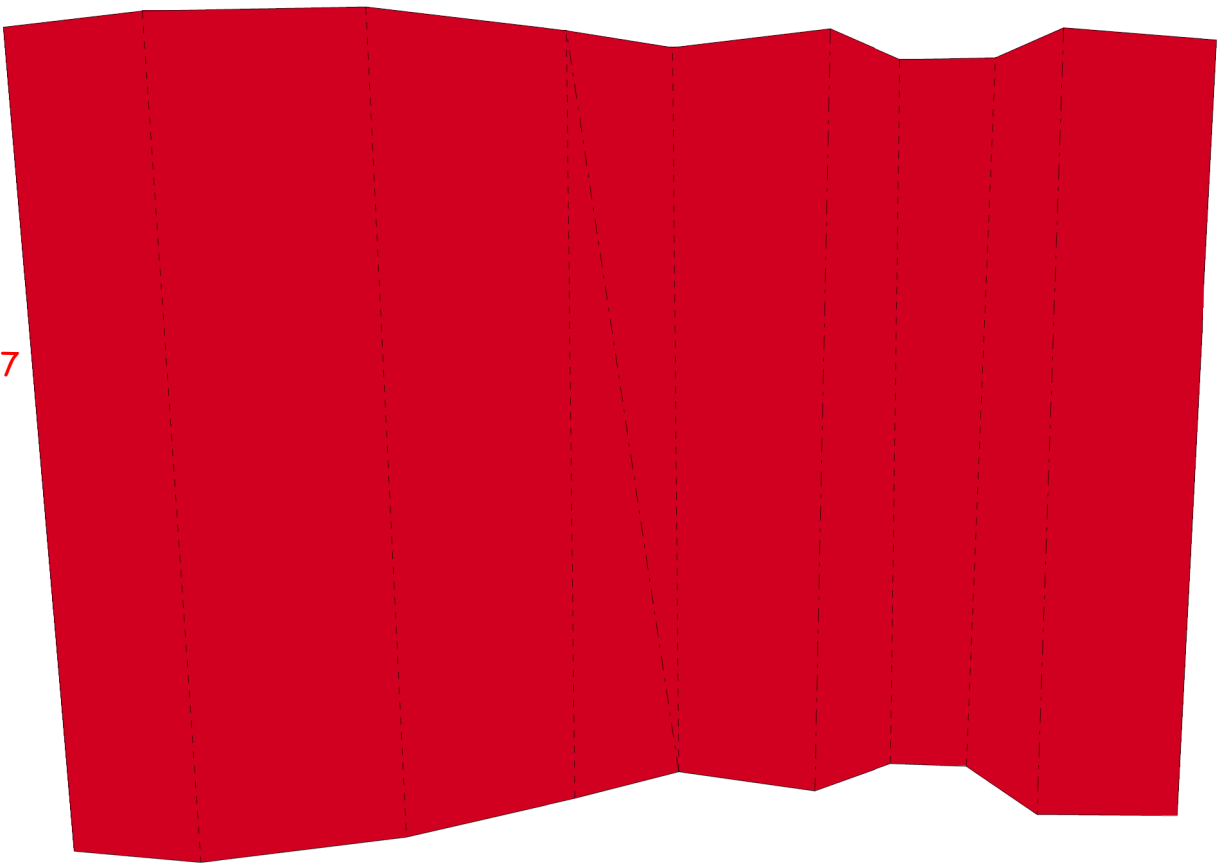
www.pokemonpapercraft.com

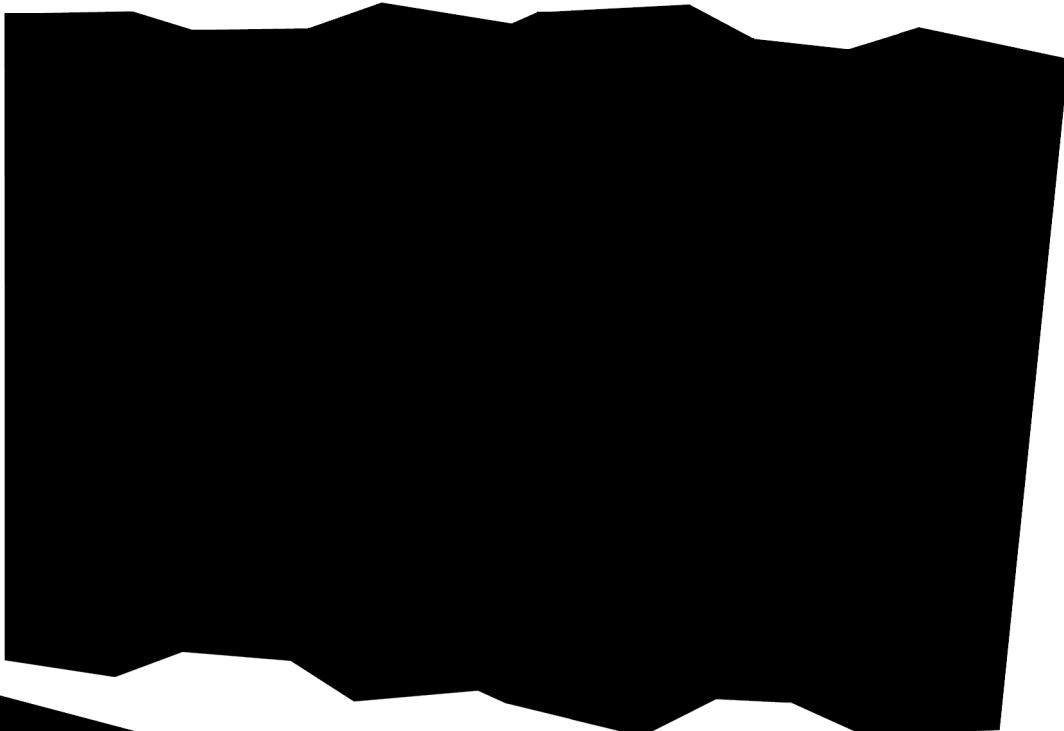


R4

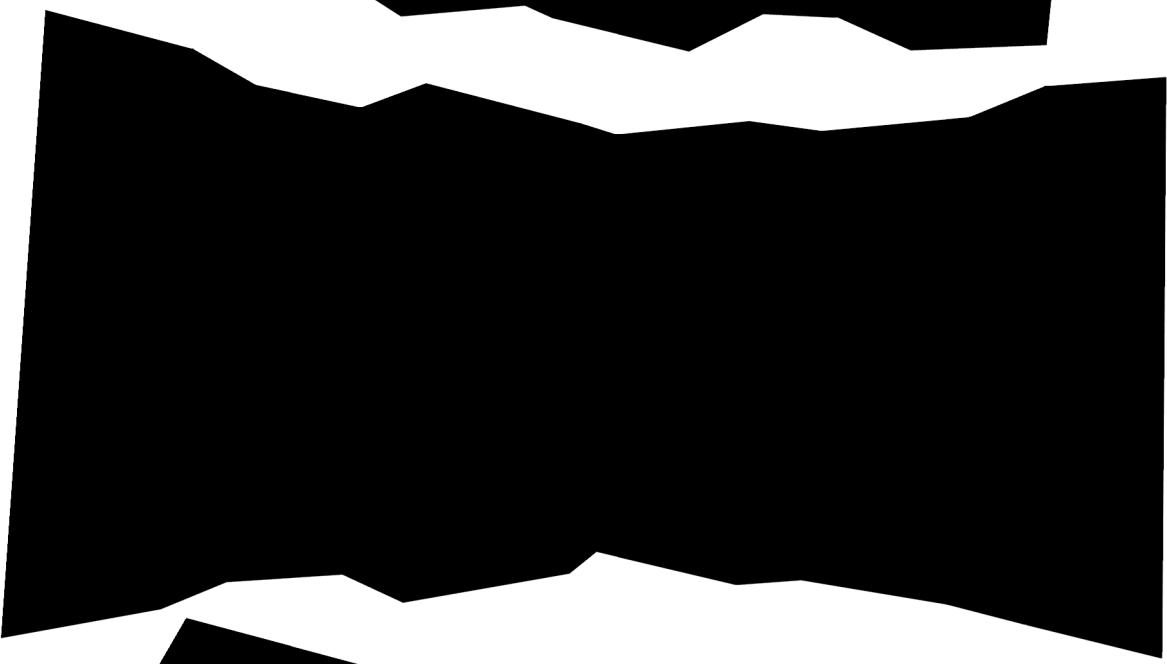


R7

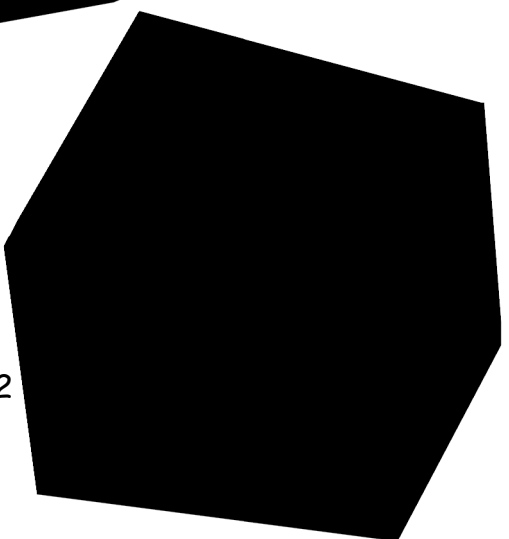




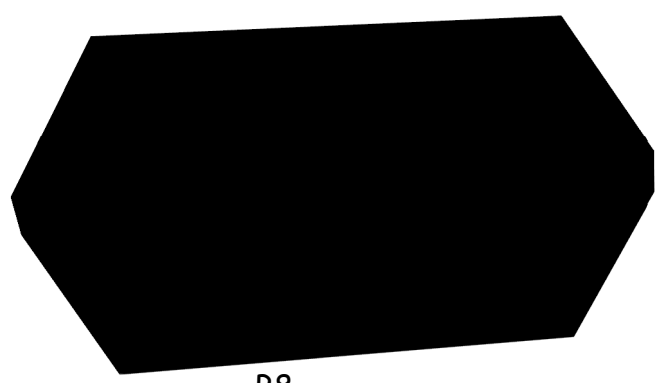
B6



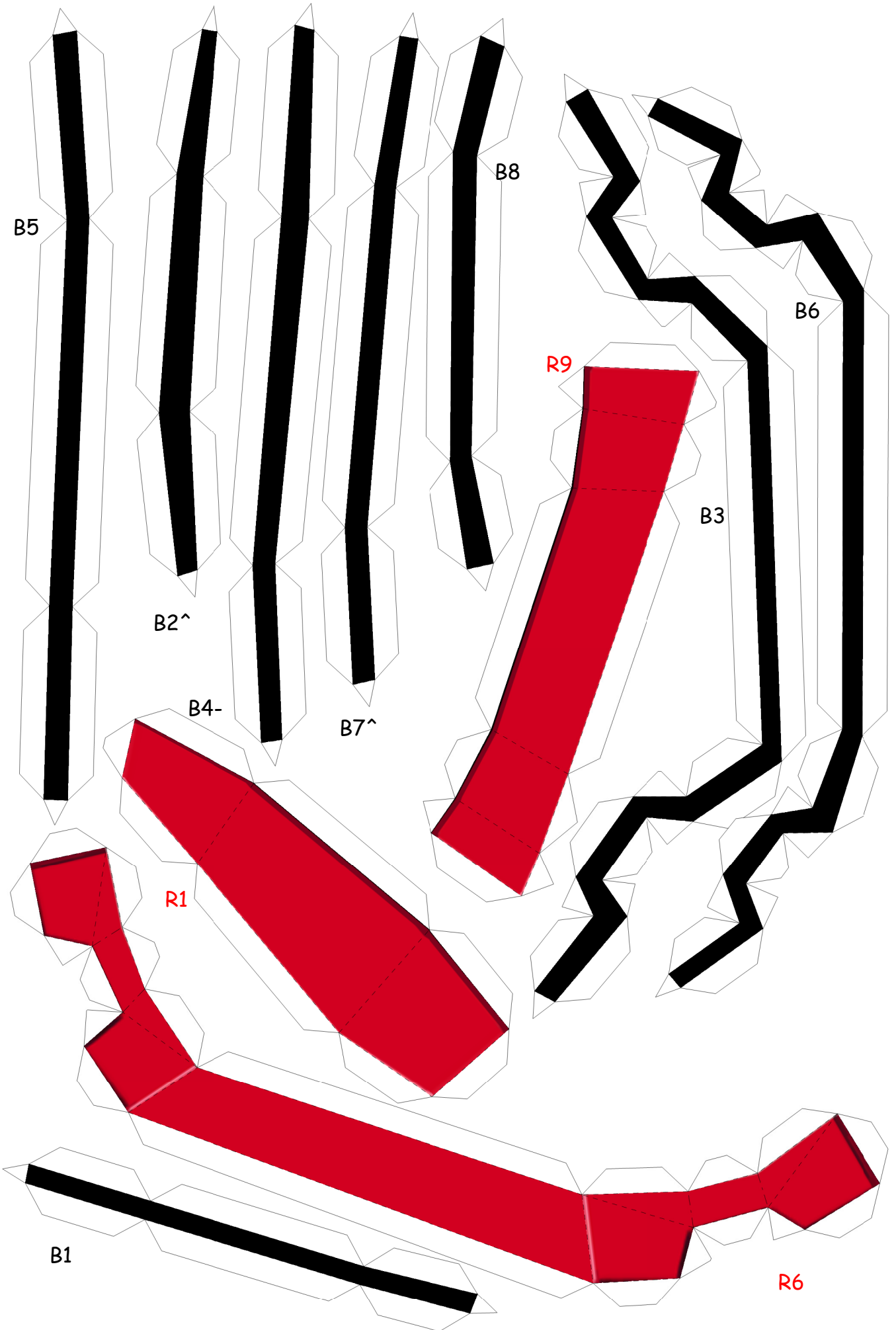
B3

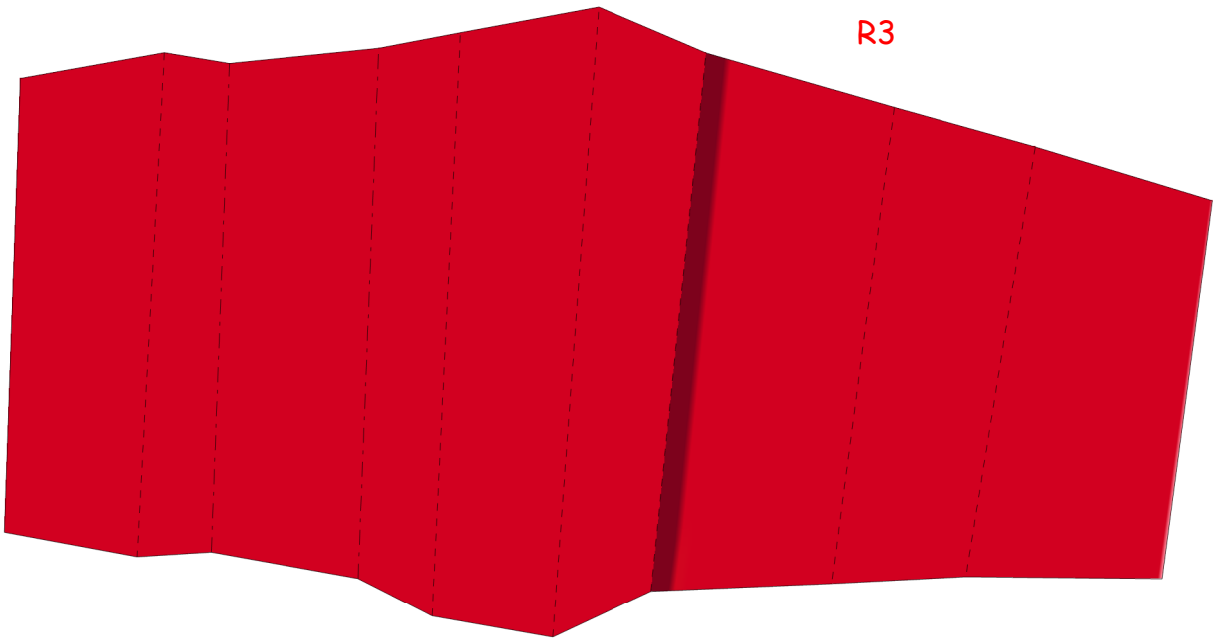


B2



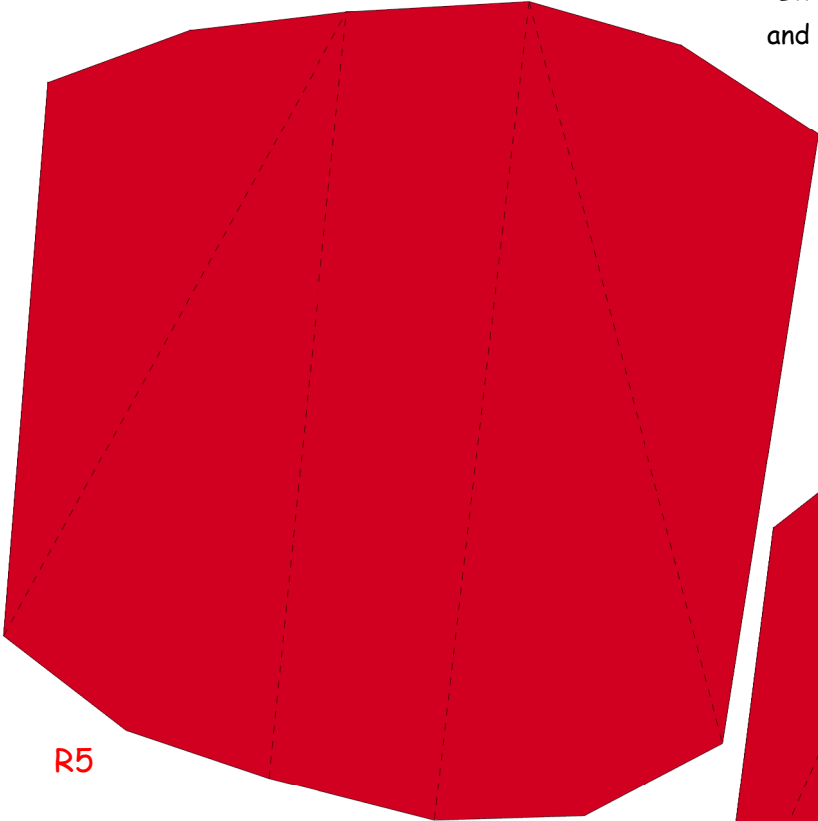
B8



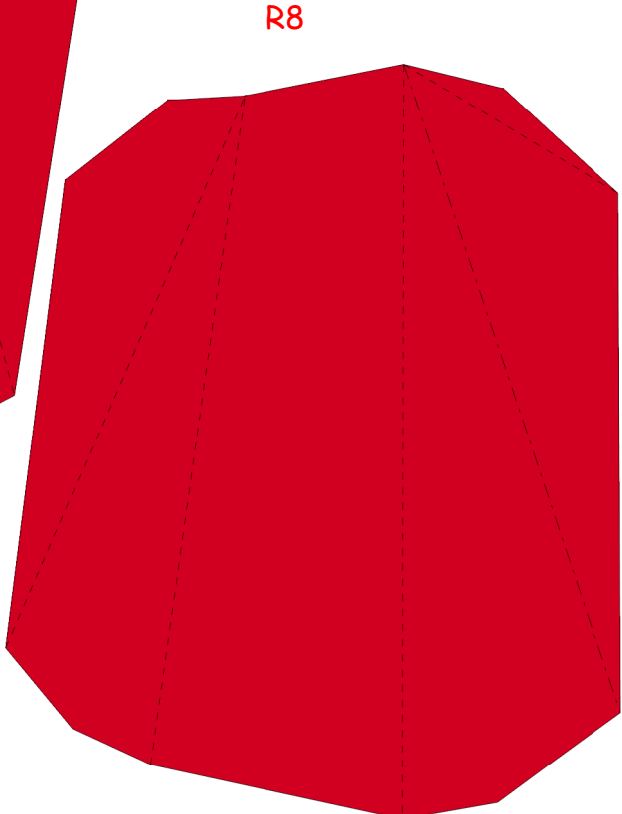


R3

Red 'R#' combo denotes back pieces
Black 'R#' combo denotes spikes
for the right side
'B#' combo are the black back pieces
and 'L#' combo are spikes on the left side

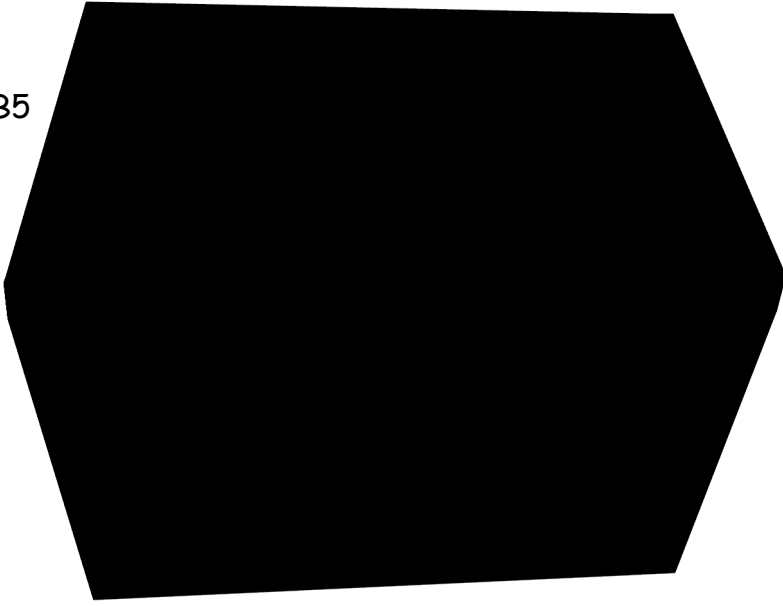


R5

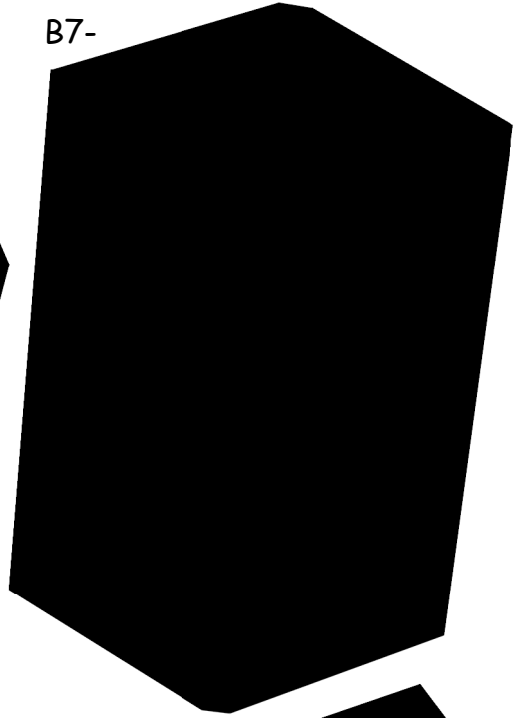


R8

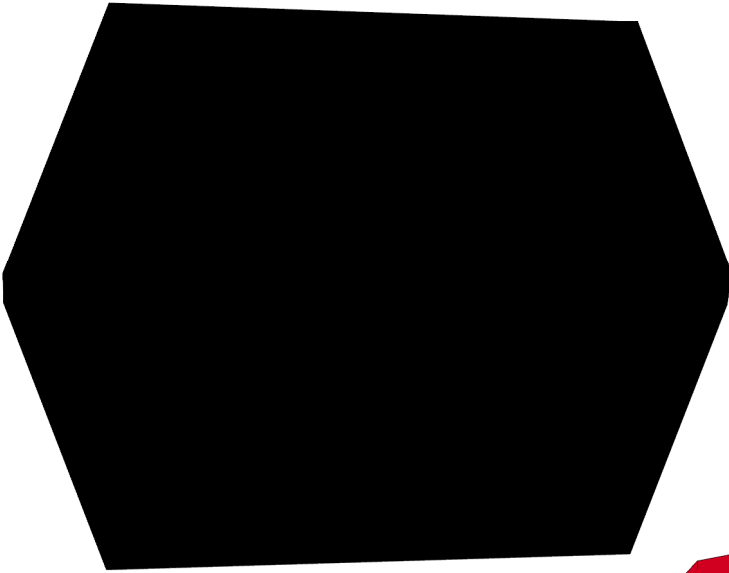
B5



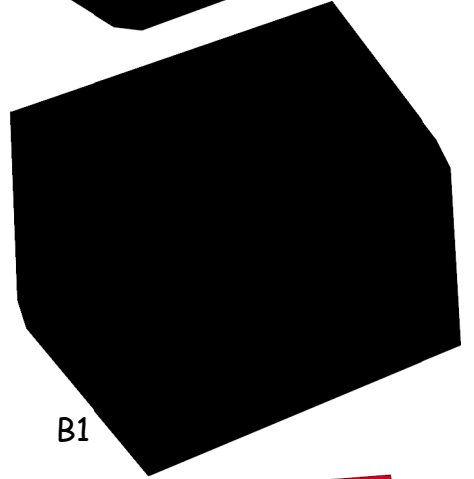
B7-



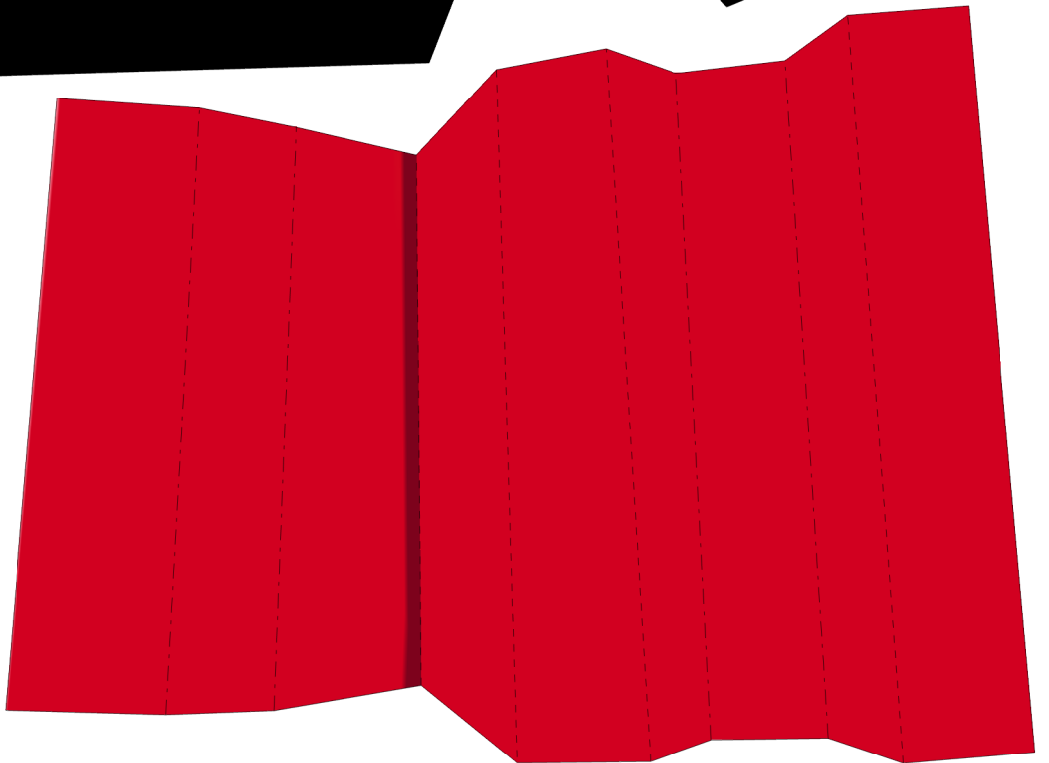
B4

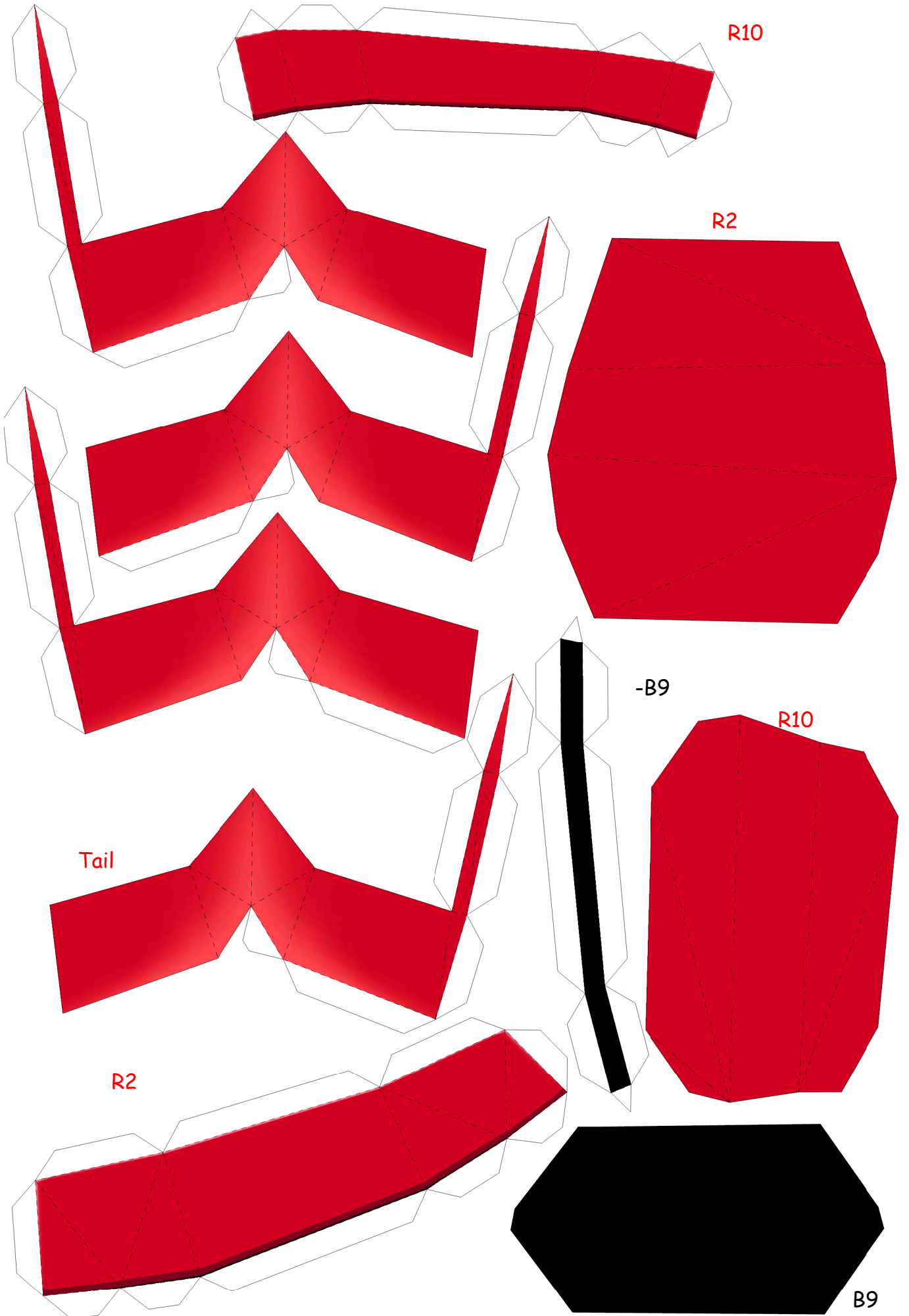


B1

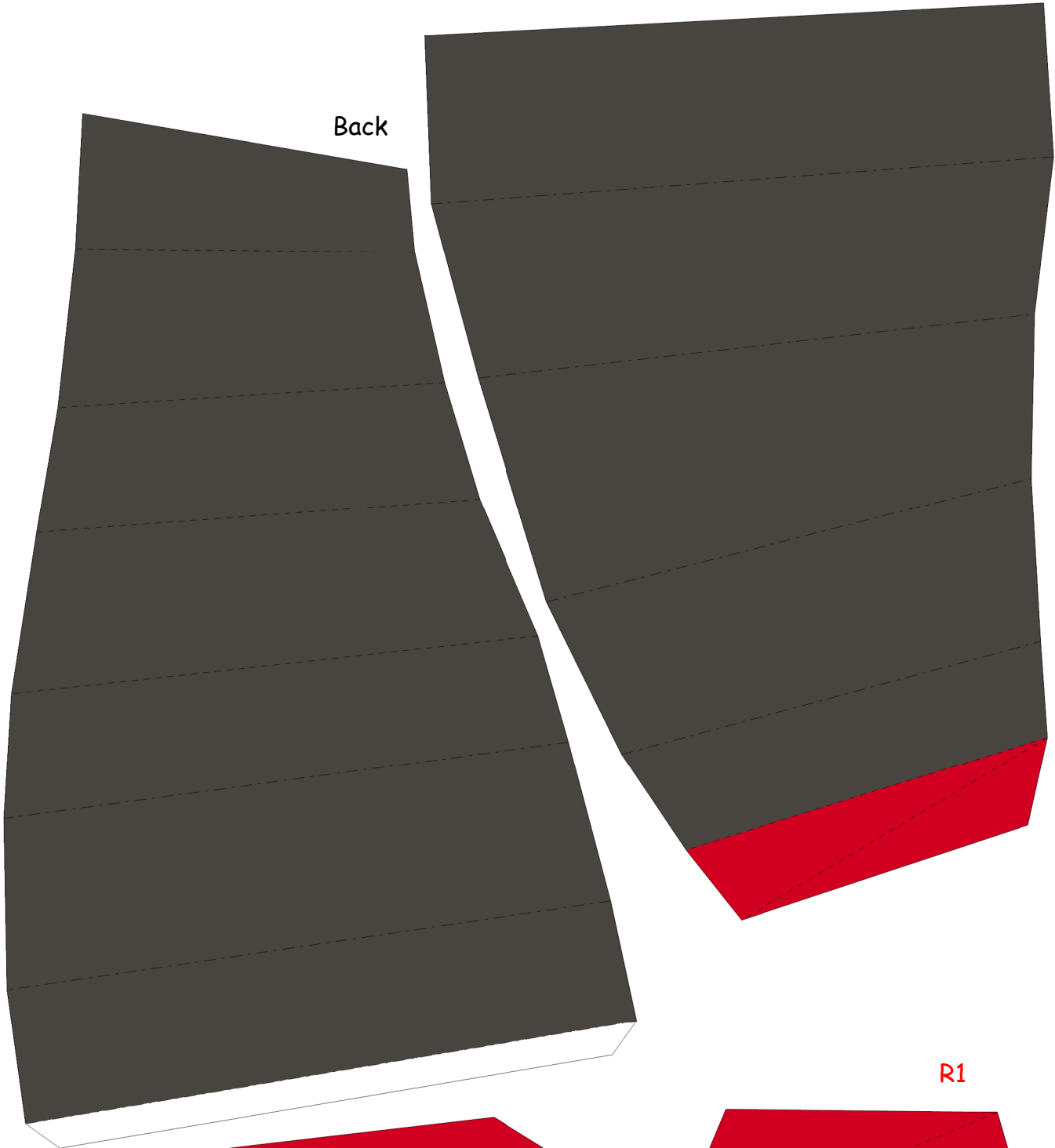


R6

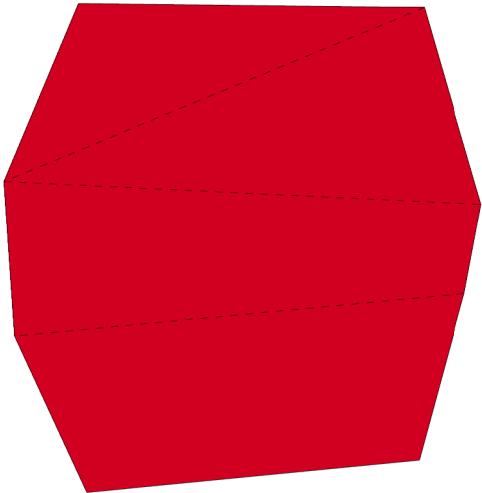




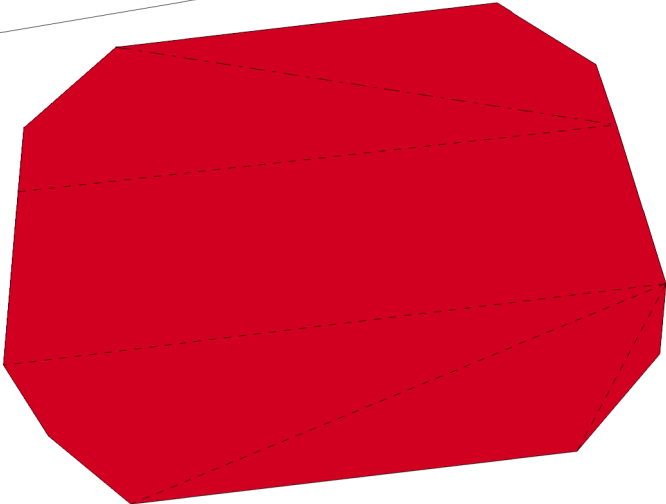
Back



R1

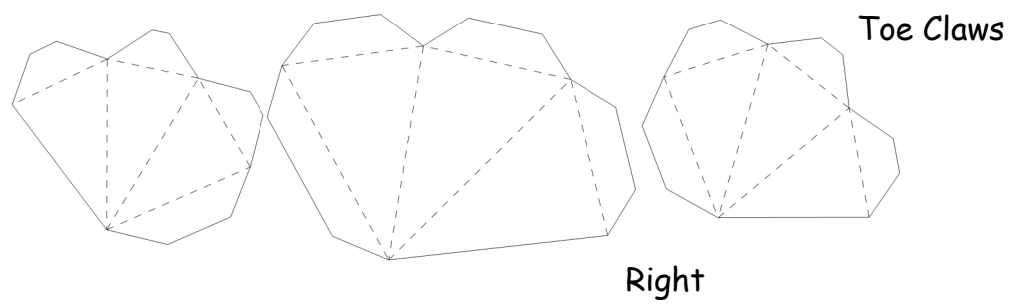
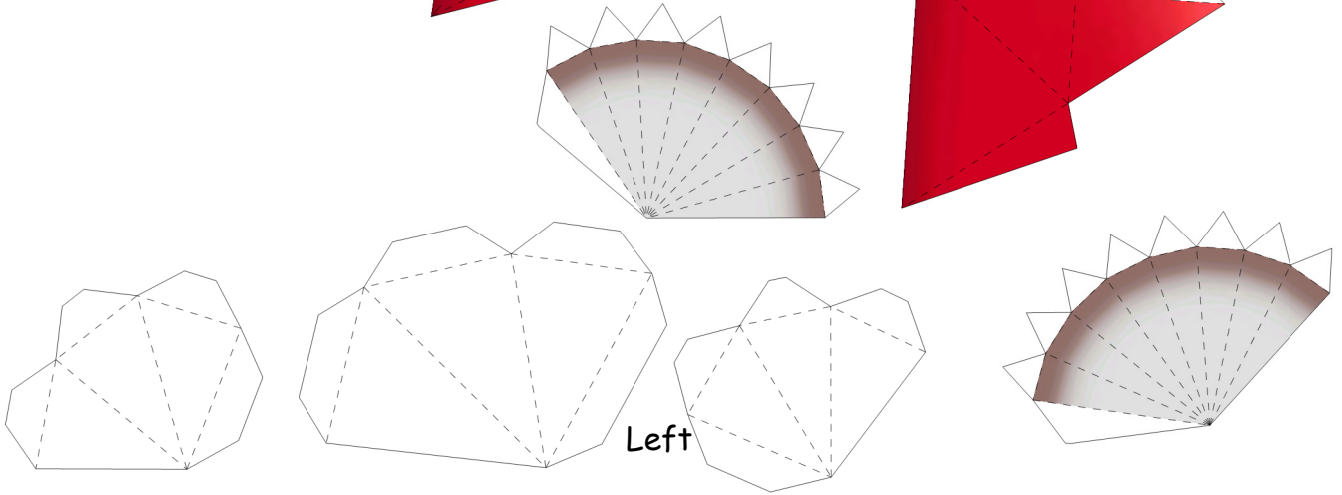
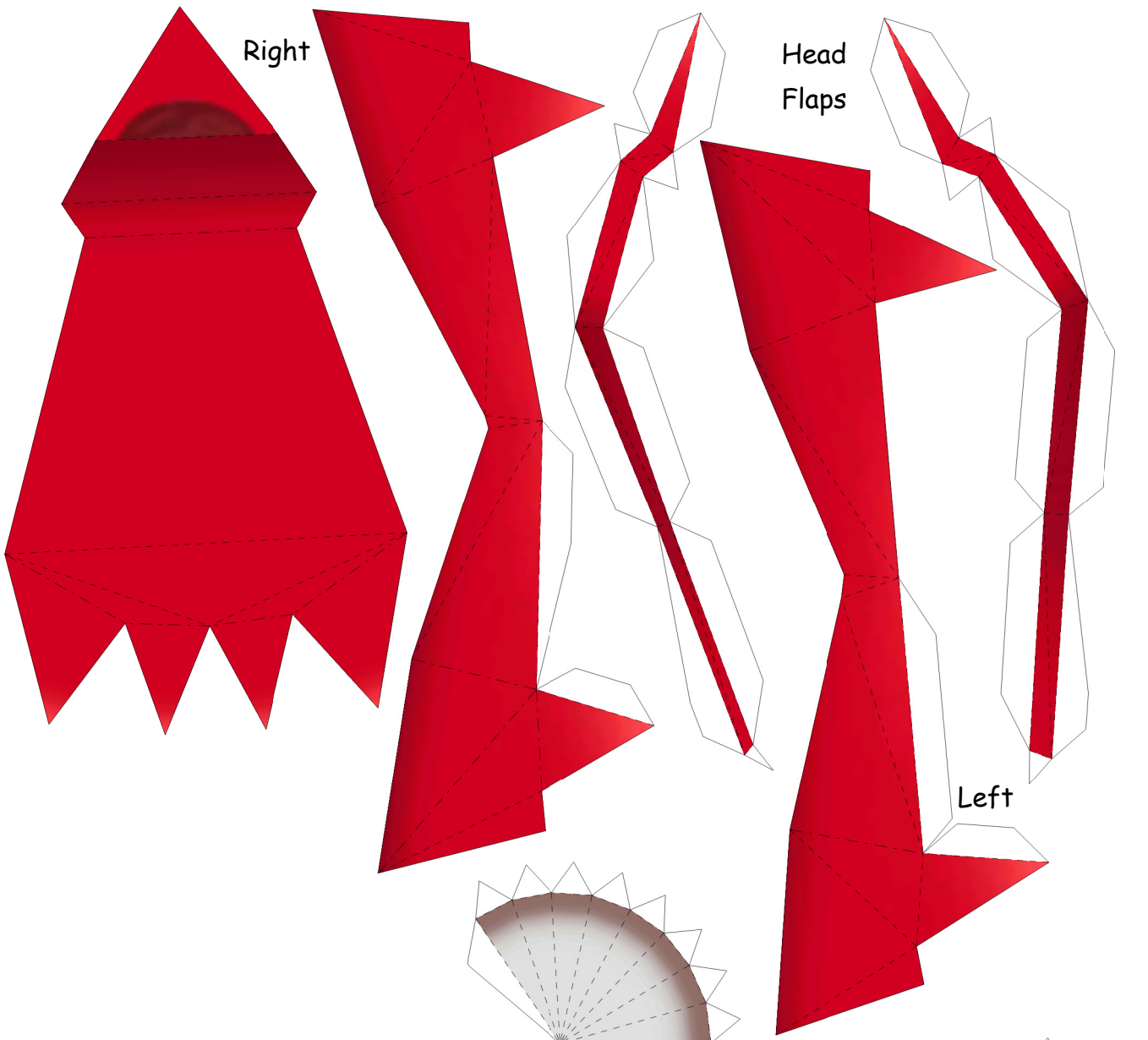


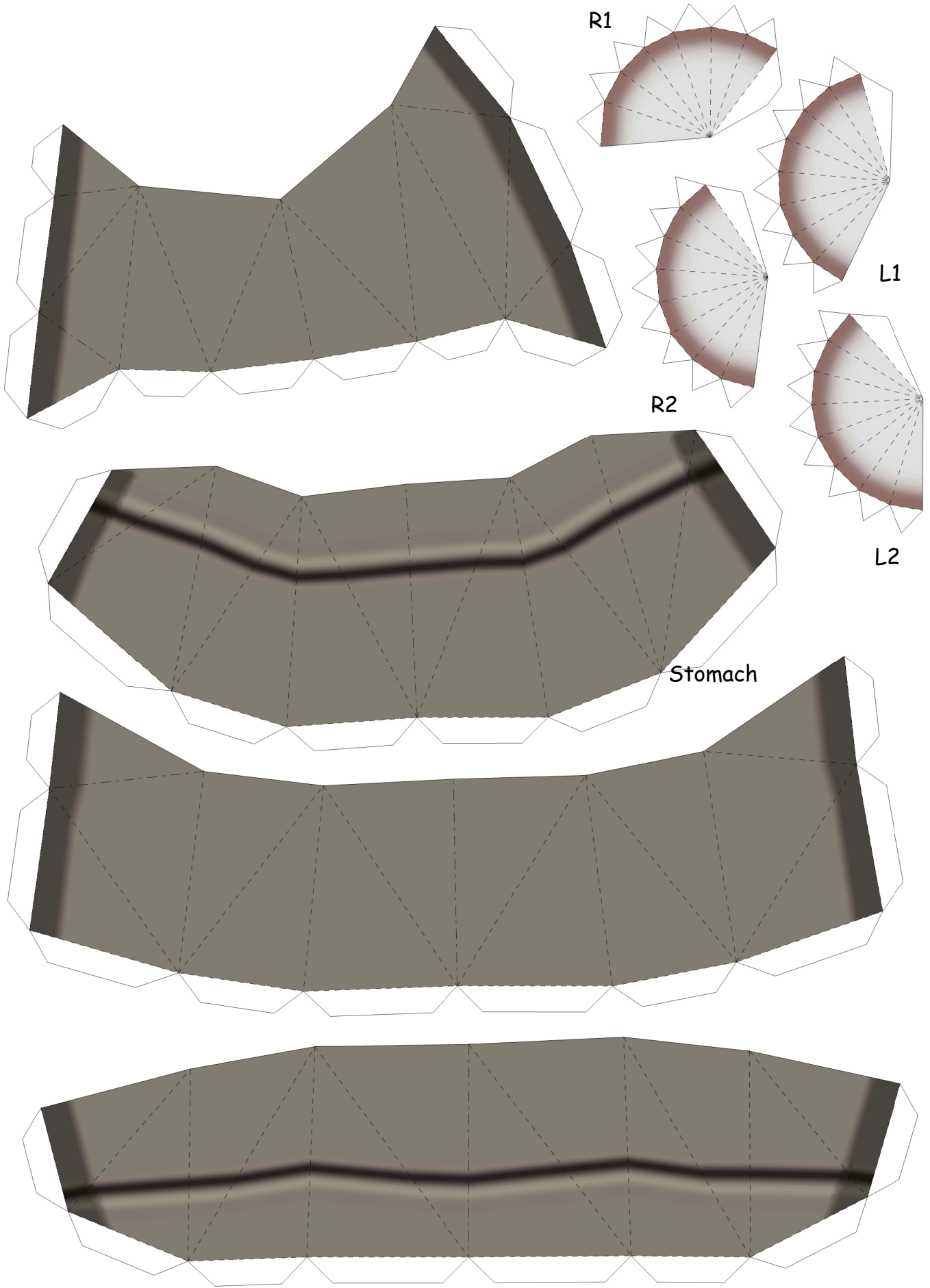
R9

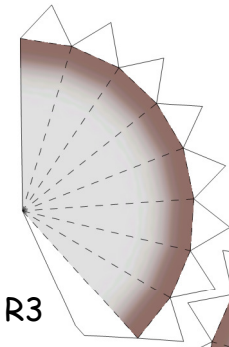
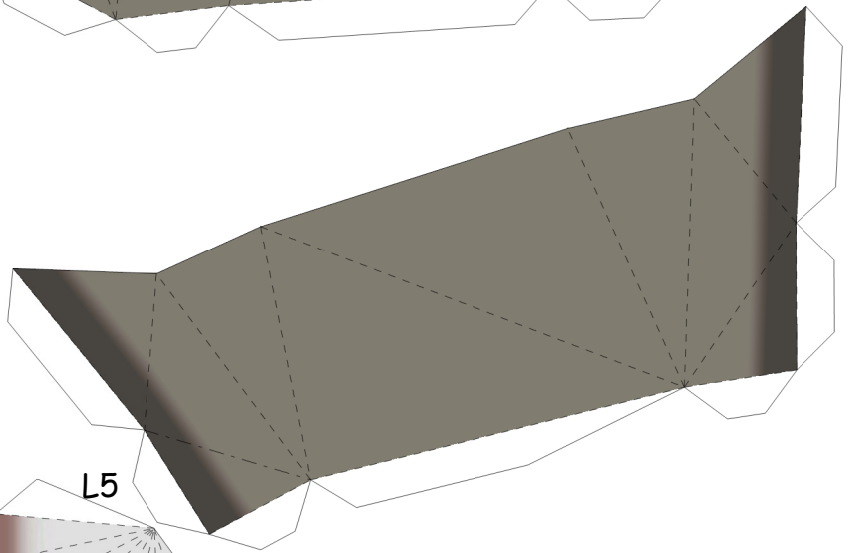
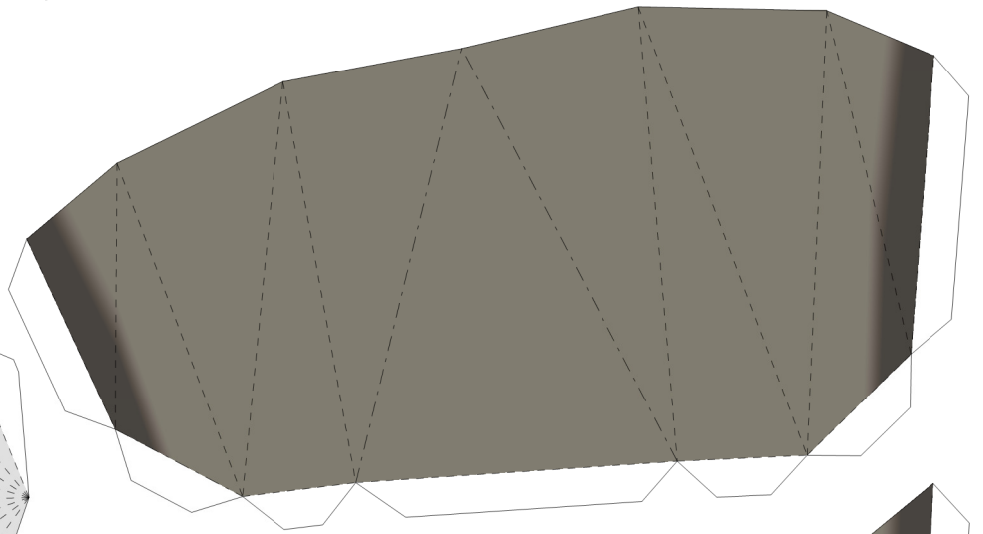
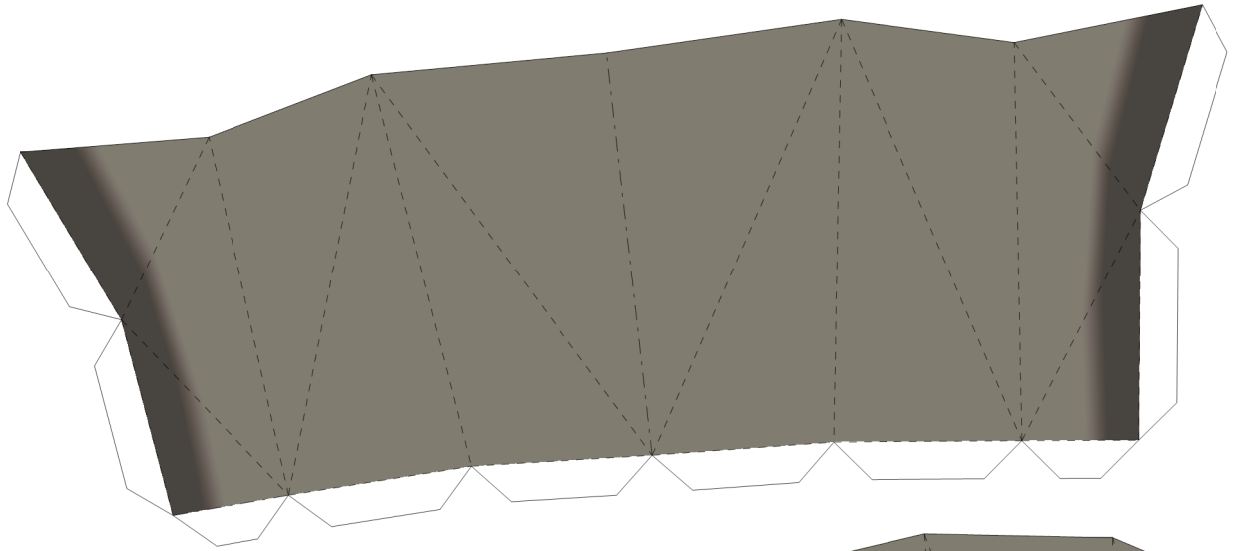




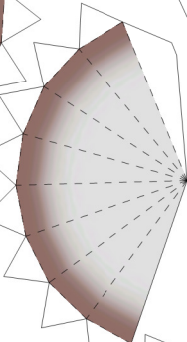
Head



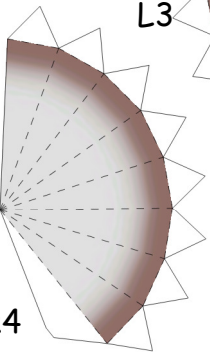




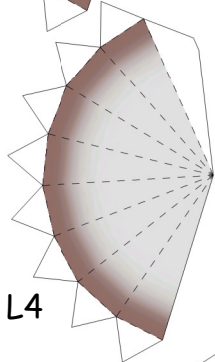
R3



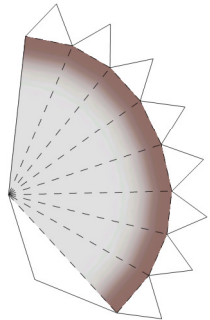
L3



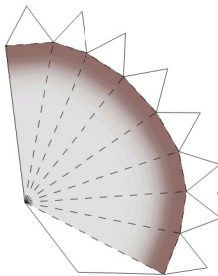
R4



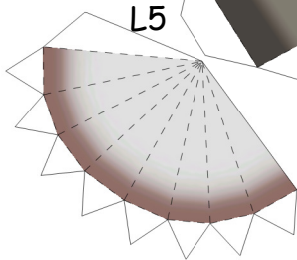
L4



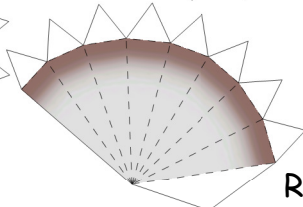
R5



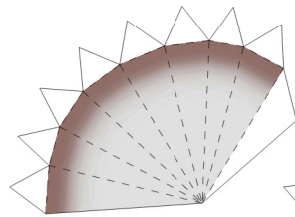
R6



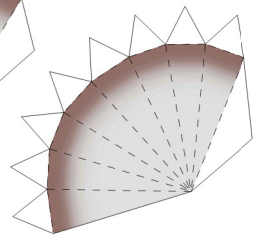
L5



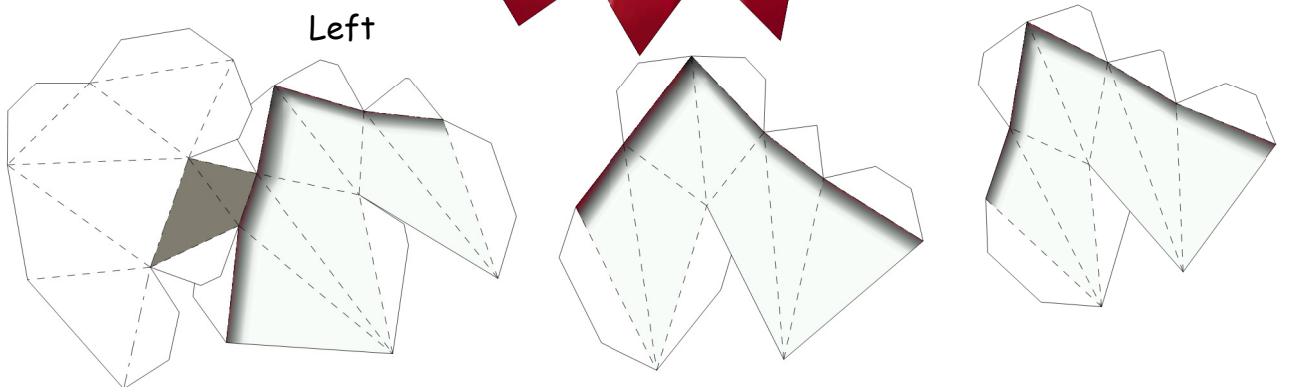
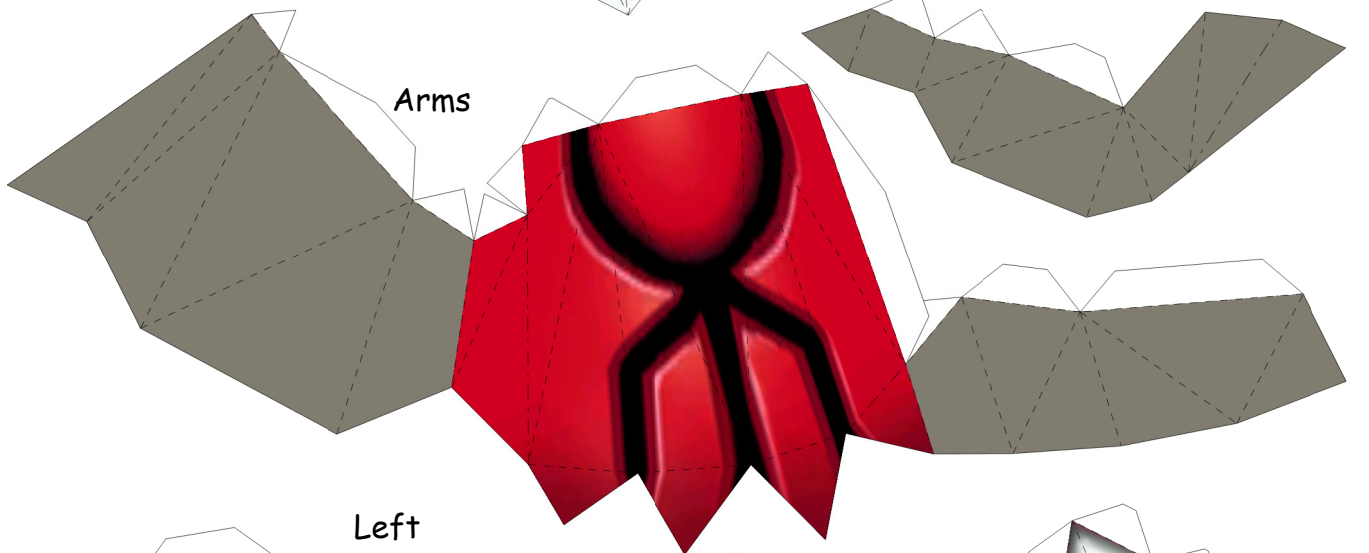
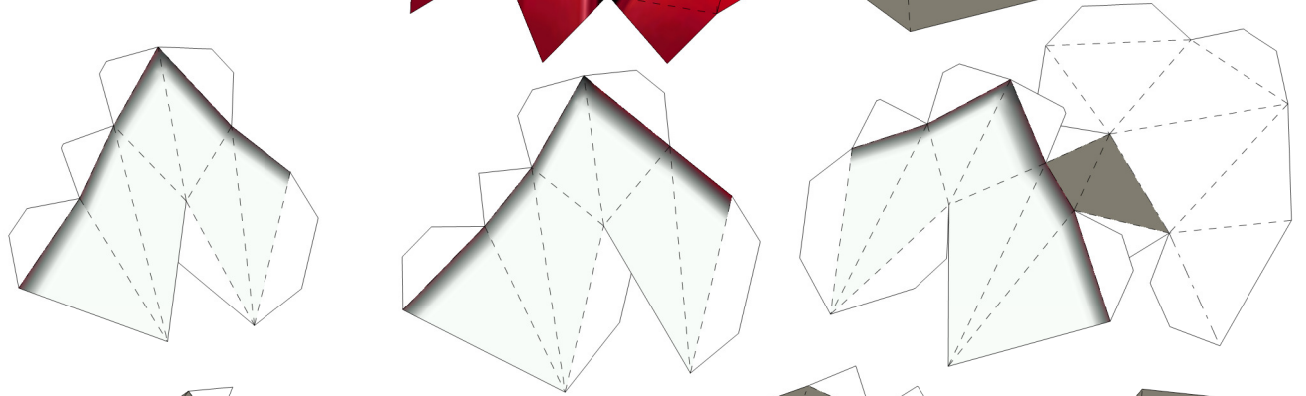
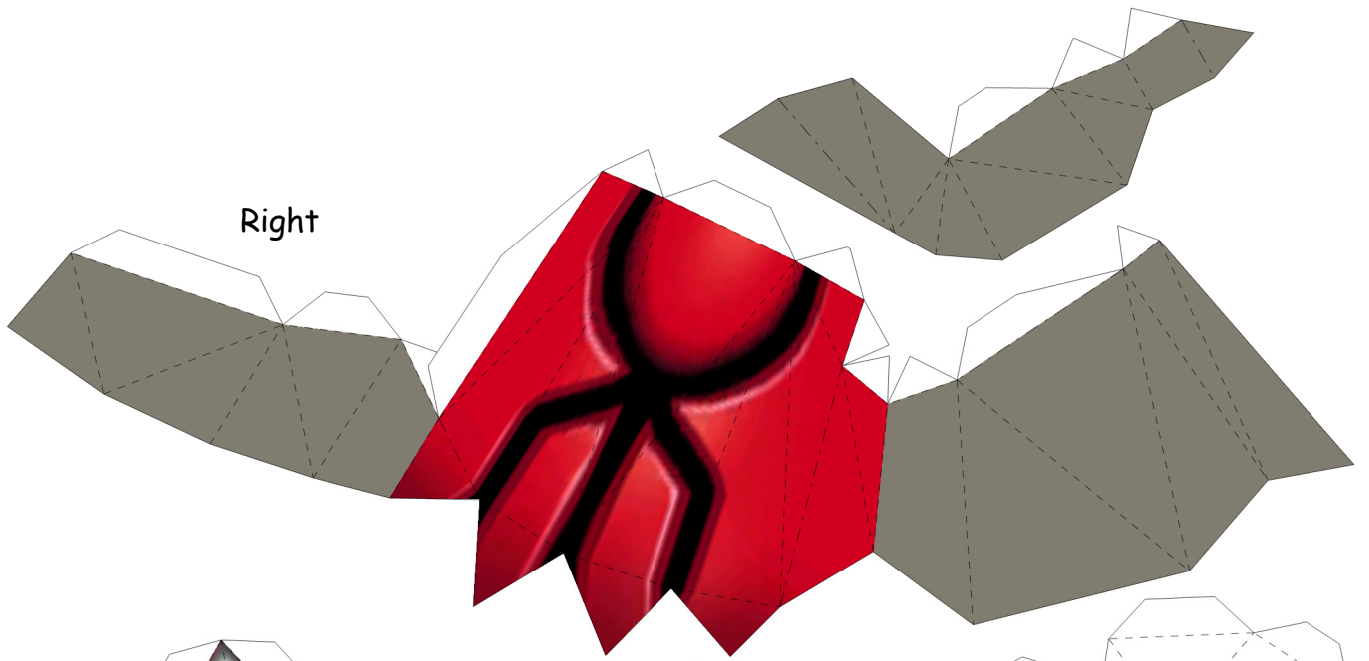
R7



L6



L7



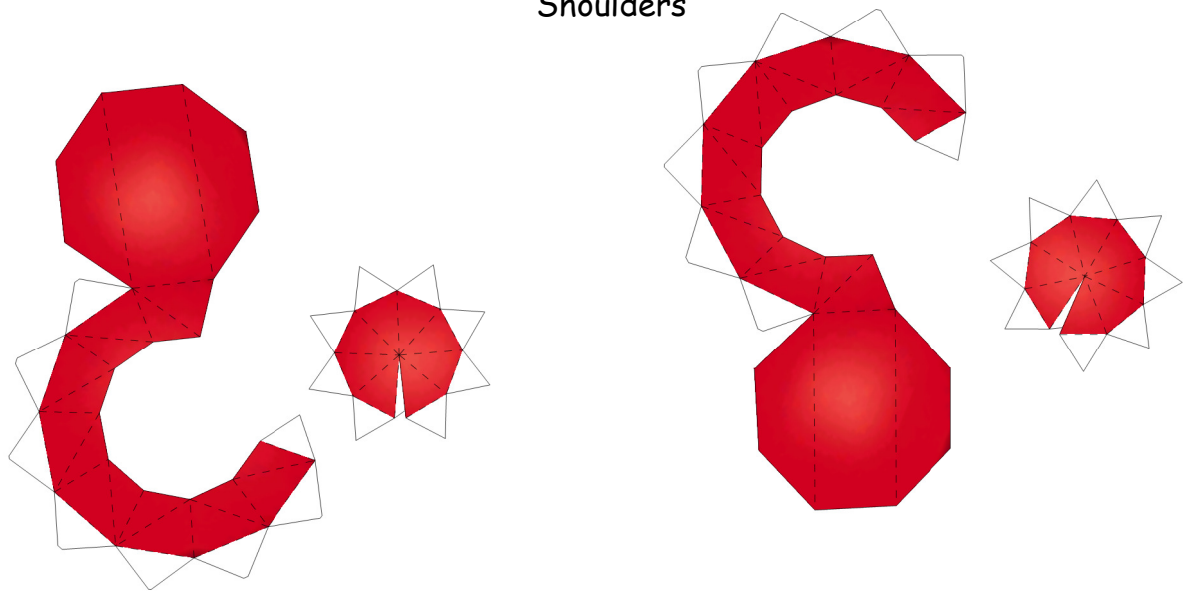
Left



Left

Shoulders

Right





Left Leg



Right Leg